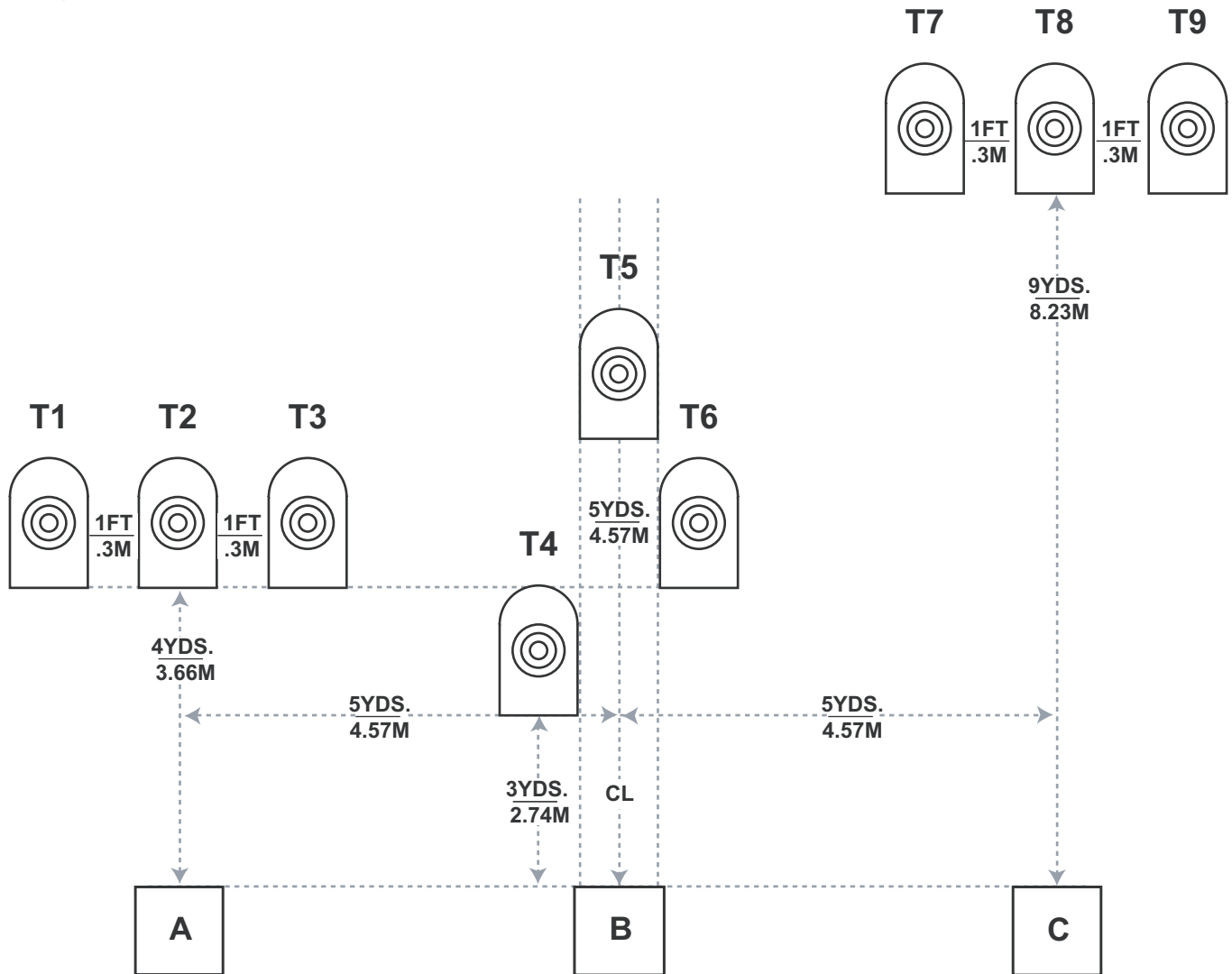




Who's The Man?

CS-035
 Designed by
Michael Higashi



Drawing is Not to Scale!

Start Position: Standing in appropriate Box, facing downrange, wrists above shoulders.

Procedure:

String 1: At start signal, from Box A engage only T1 thru T3 with only two (2) rounds each in any order.

String 2: At start signal, from Box B engage only T4 thru T6 with only two (2) rounds each in any order.

String 3: At start signal, from Box C engage only T7 thru T9 with only two (2) rounds each in any order.

Scoring: Shots Limited

Targets: 9 NRA D-1 paper

Rounds: 18

Start: Audible

Stop: Last shot

Penalties: Per the ICORE rulebook. Foot faults, extra shots, extra hits, procedural and misses +5 seconds per occurrence.

Stage Setup: Place targets per drawing dimensions. Set targets T1 thru T9 at standard height with top of target 1.65 m (5 feet 6 inch) +/- 5cm (2 inches) from ground. Alignment is shown to centerlines of boxes and targets, unless otherwise noted.

Shooting boxes are approximately 1m x 1m (3 feet x 3 feet).

CS-035

Shots Limited



Who's The Man?

Target	A	B	C	M	Hits
T1					2
T2					2
T3					2
T4					2
T5					2
T6					2
T7					2
T8					2
T9					2

R.O. _____

Shooter _____

	String 1 Time
	String 2 Time
	String 3 Time

Total Hits		+		+		+		=	18
------------	--	---	--	---	--	---	--	---	----

Time Factor	x0		x1		x2		x5		
-------------	----	--	----	--	----	--	----	--	--

		+		+		=	
--	--	---	--	---	--	---	--

Extra Shots		X5=	
-------------	--	-----	--

Extra Hits		X5=	
------------	--	-----	--

Procedurals		X5=	
-------------	--	-----	--

Notes

	Subtotal Time
	Hit Time Added
	+ Extra Shots
	+ Extra Hits
	+ Procedurals
	Total

Name _____

ICORE Number _____

Date _____ Club _____

Classic / Limited / Open (Circle one)